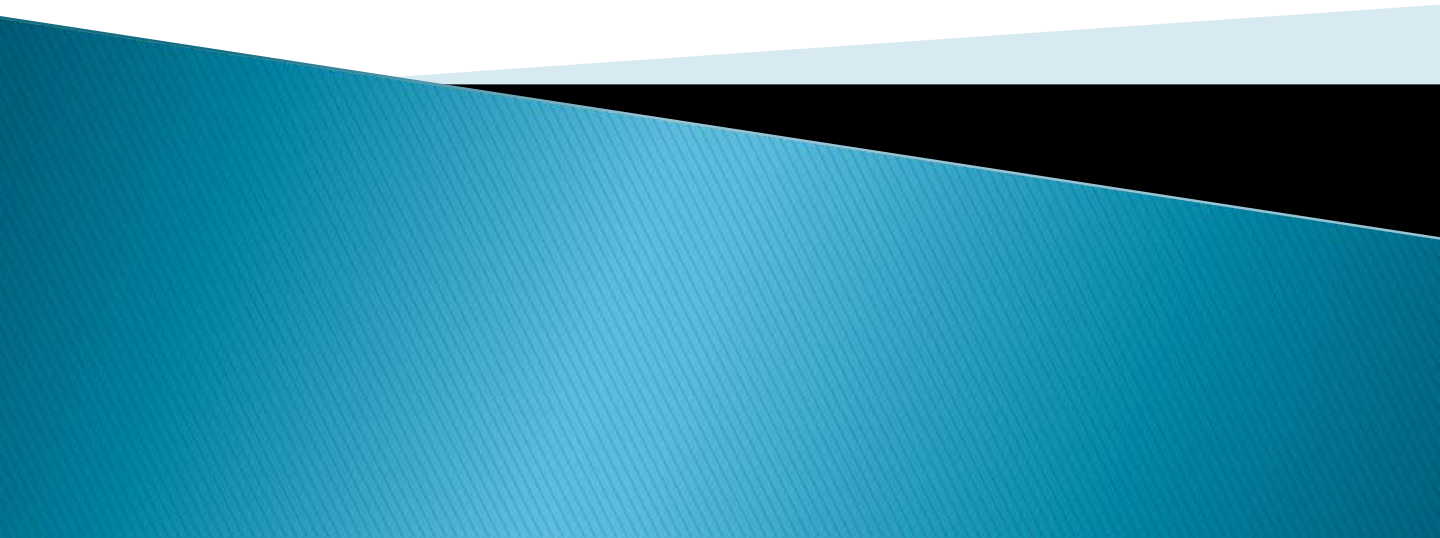
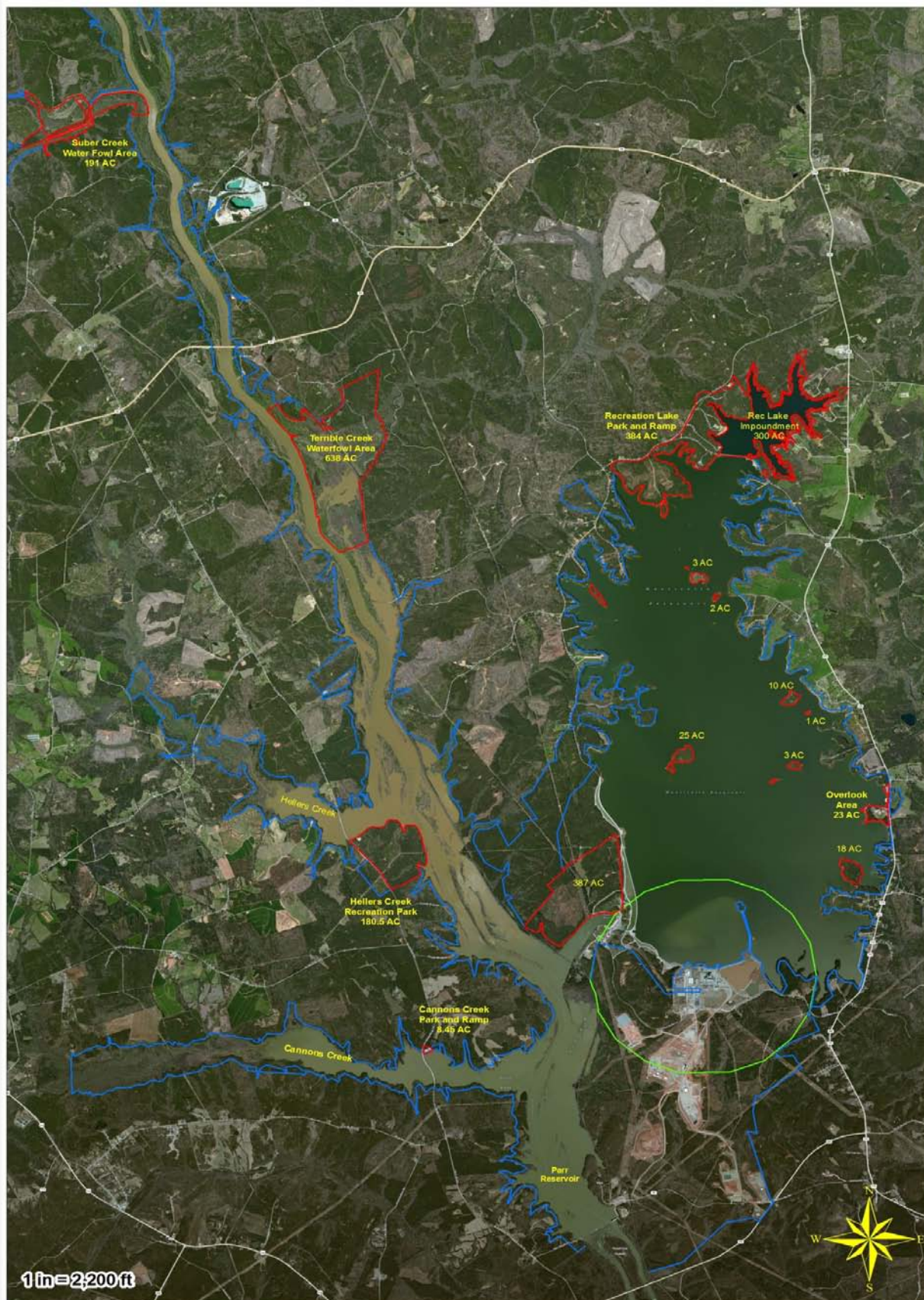


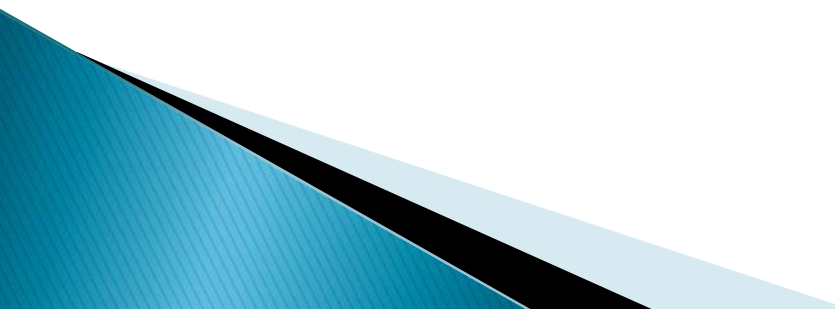
Parr & Fairfield Project 1894

Recreation
Overview





Project 1894

- ▶ Monticello Reservoir:
 - ▶ 6,700 Surface Acres
 - ▶ 54 Shoreline Miles
 - ▶ PBL 50' to 200' wide
 - ▶ Recreation Lake:
 - ▶ 300 Surface Acres
 - ▶ 10.2 Shoreline Miles
 - ▶ Parr Reservoir:
 - ▶ 4,400 Surface Acres
 - ▶ 94 Shoreline Miles
- 

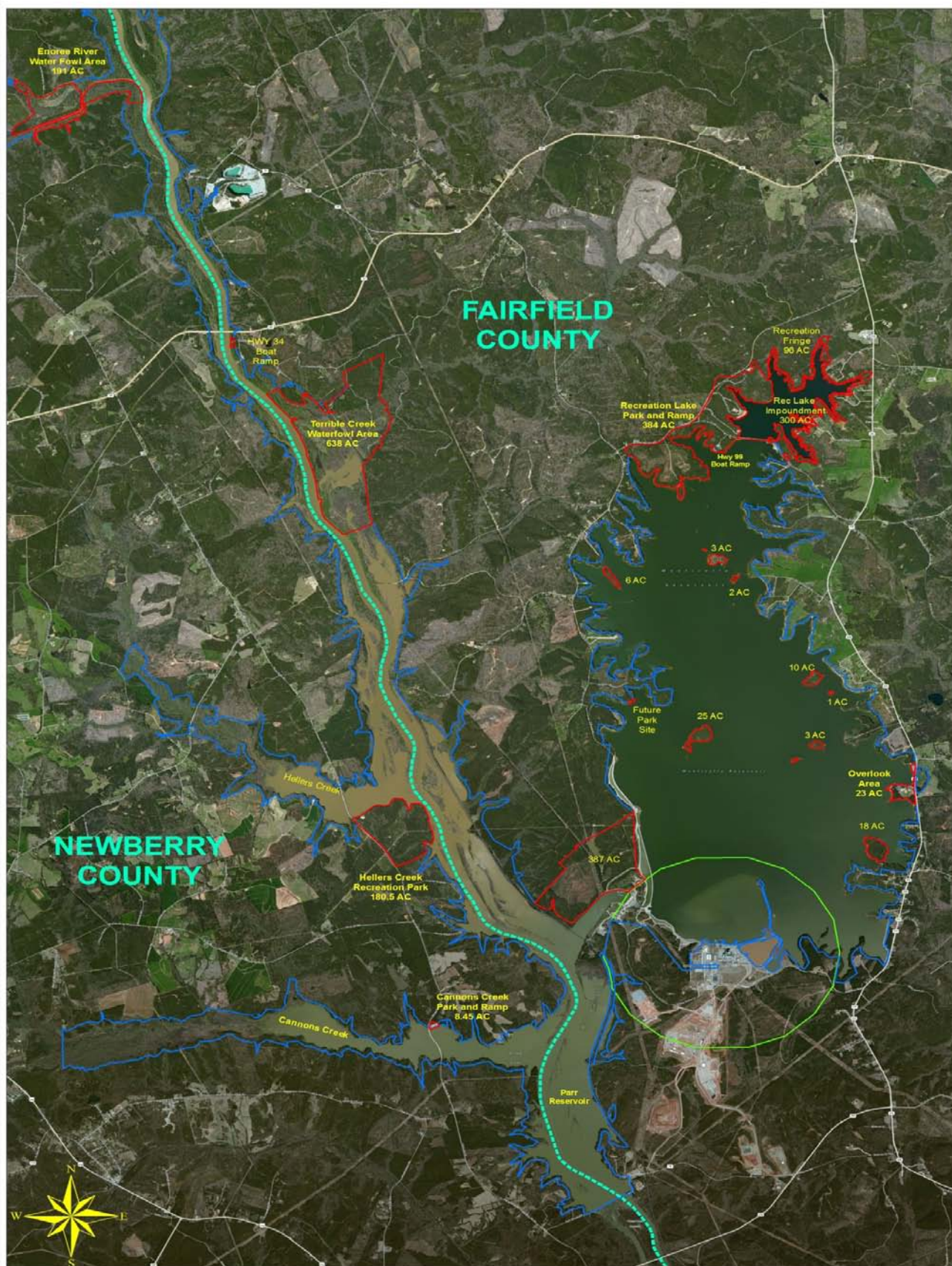
Monticello Reservoir

Shoreline Classifications

- ▶ Project works 2.3 Miles
- ▶ Nuclear Excl. Zone 7.2 Miles
- ▶ Recreation Property 7.2 Miles
- ▶ Dock Excl. Property 12.2 Miles
- ▶ Dock Permittable 21.6 Miles
- ▶ **Total: 54.1 Miles**

▶ Recreation Lake

- ▶ Recreation Property 2.2 Miles
- ▶ Dock Excl. Property 8.0 Miles
- ▶ **Total: 10.2 Miles**





Scenic Overlook

reservoir

Baltic Circle

Baltic Circle

215

215

215

215

215



Hwy 215 Boat Ramp

Monticello Reservoir





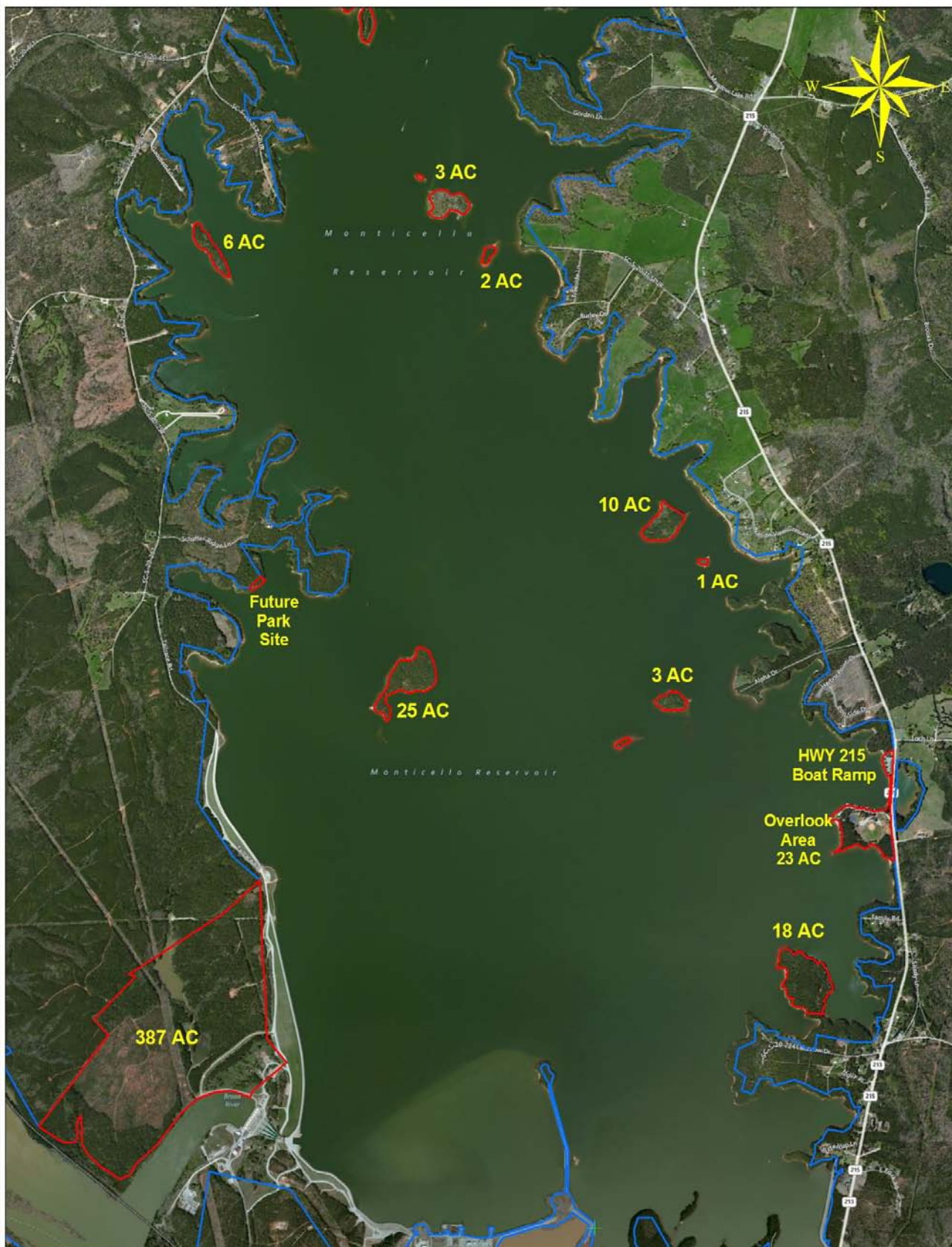




Recreation Lake Park Site and Boat Ramp

Monticello

SC=S-20-00





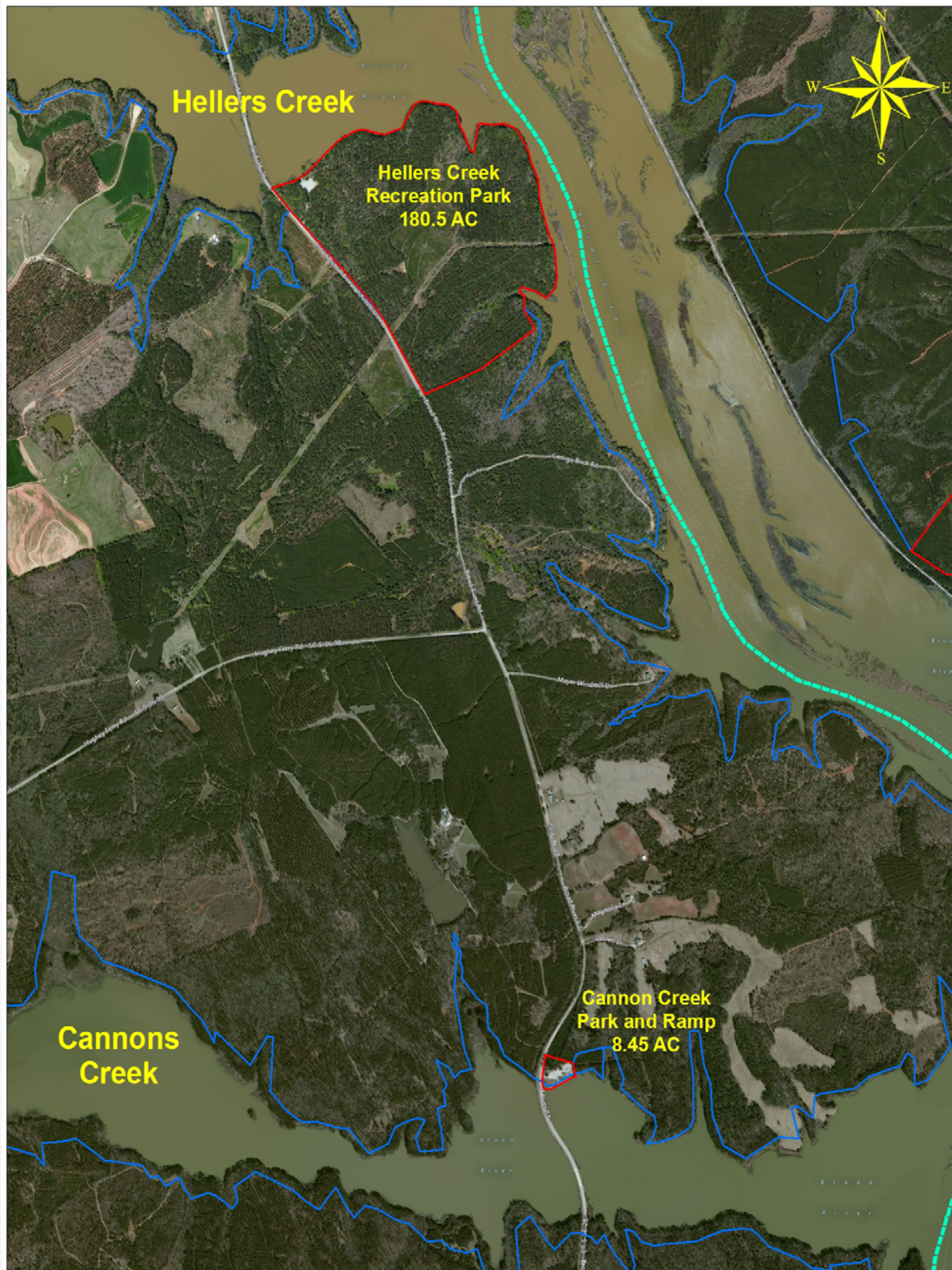
Monticell

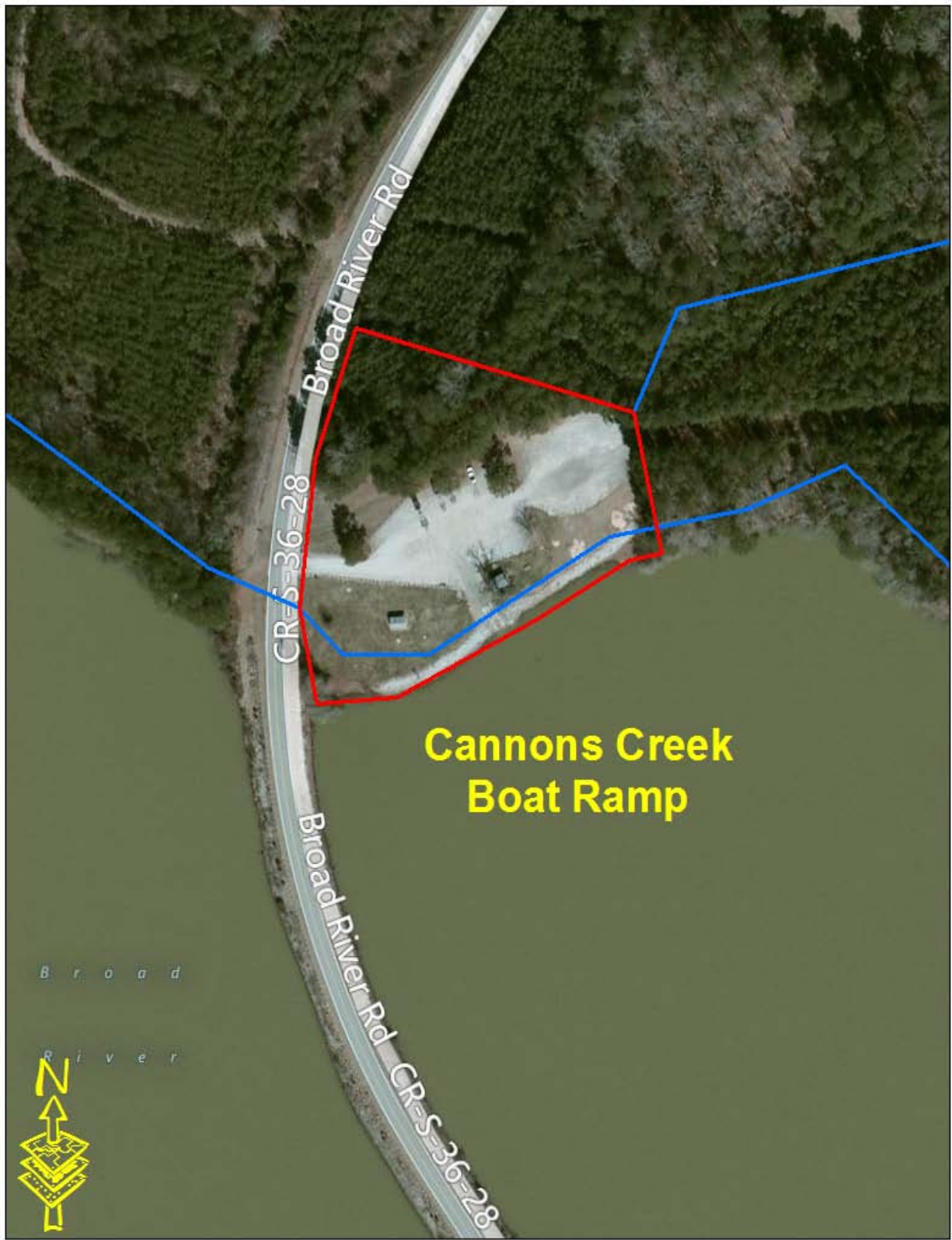
Future Park Site



**Lyne Tract
387 AC**







**Cannons Creek
Boat Ramp**



B r o a d R i v e r

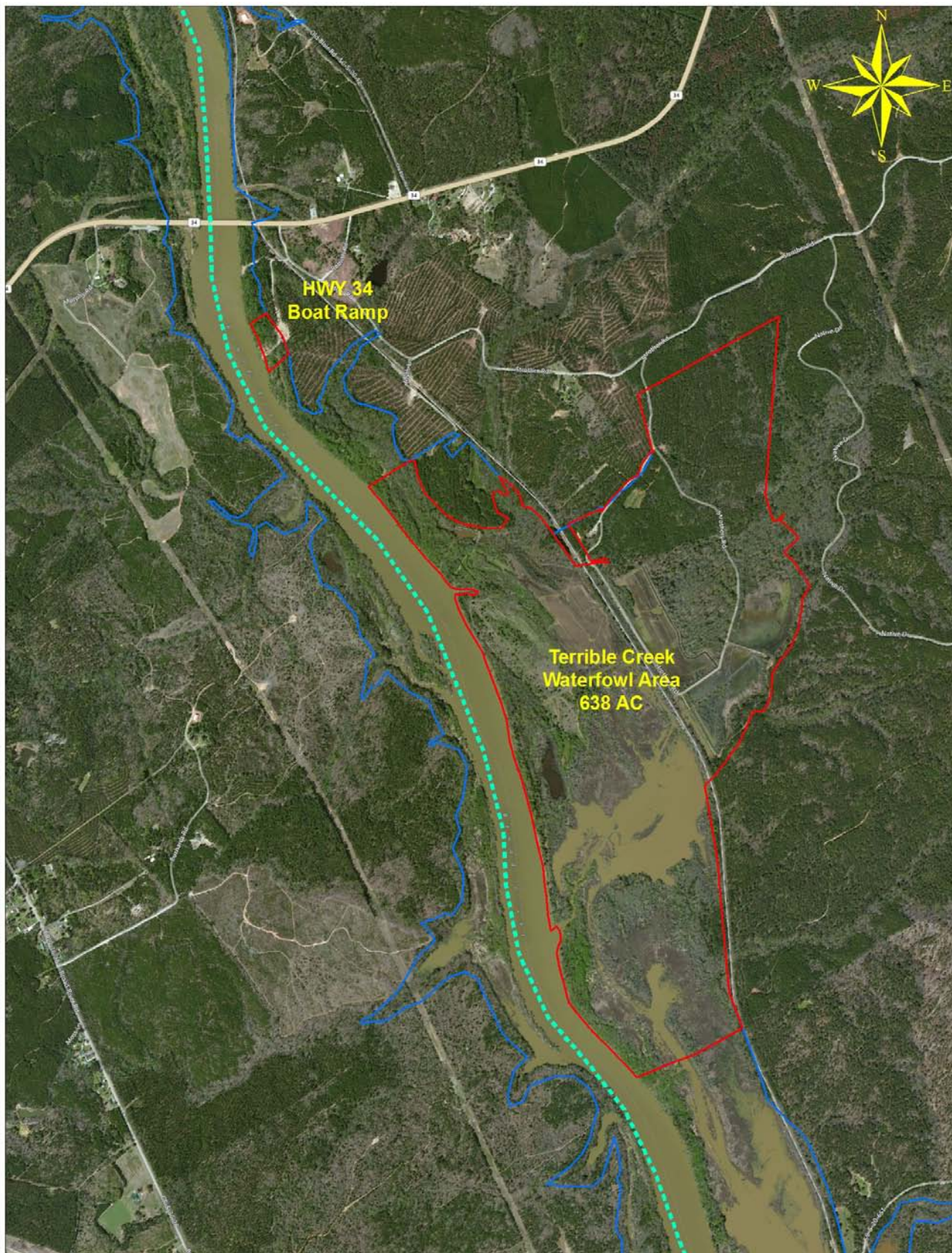
Hellers Creek Boat Ramp

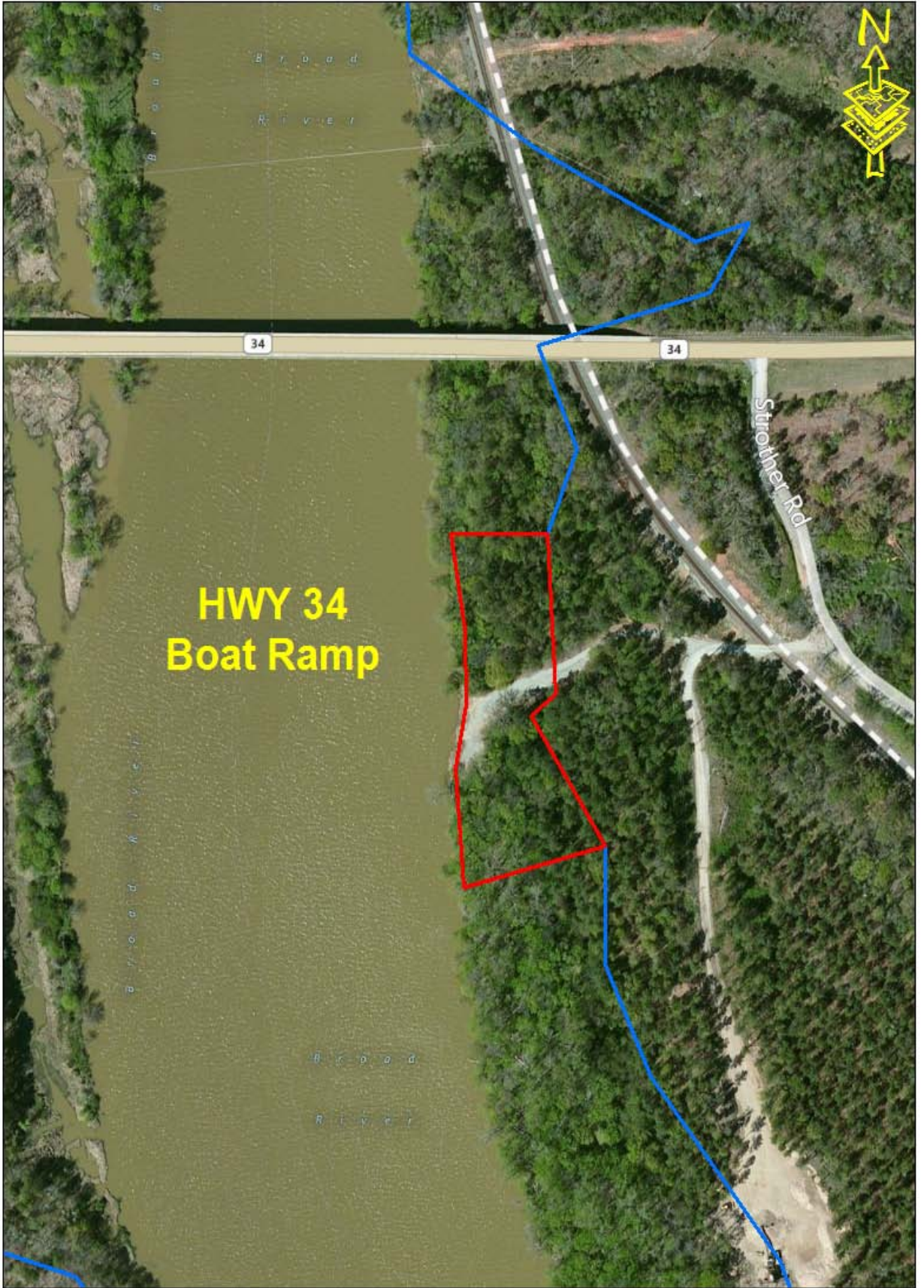
Broad River Rd

Broad River Rd

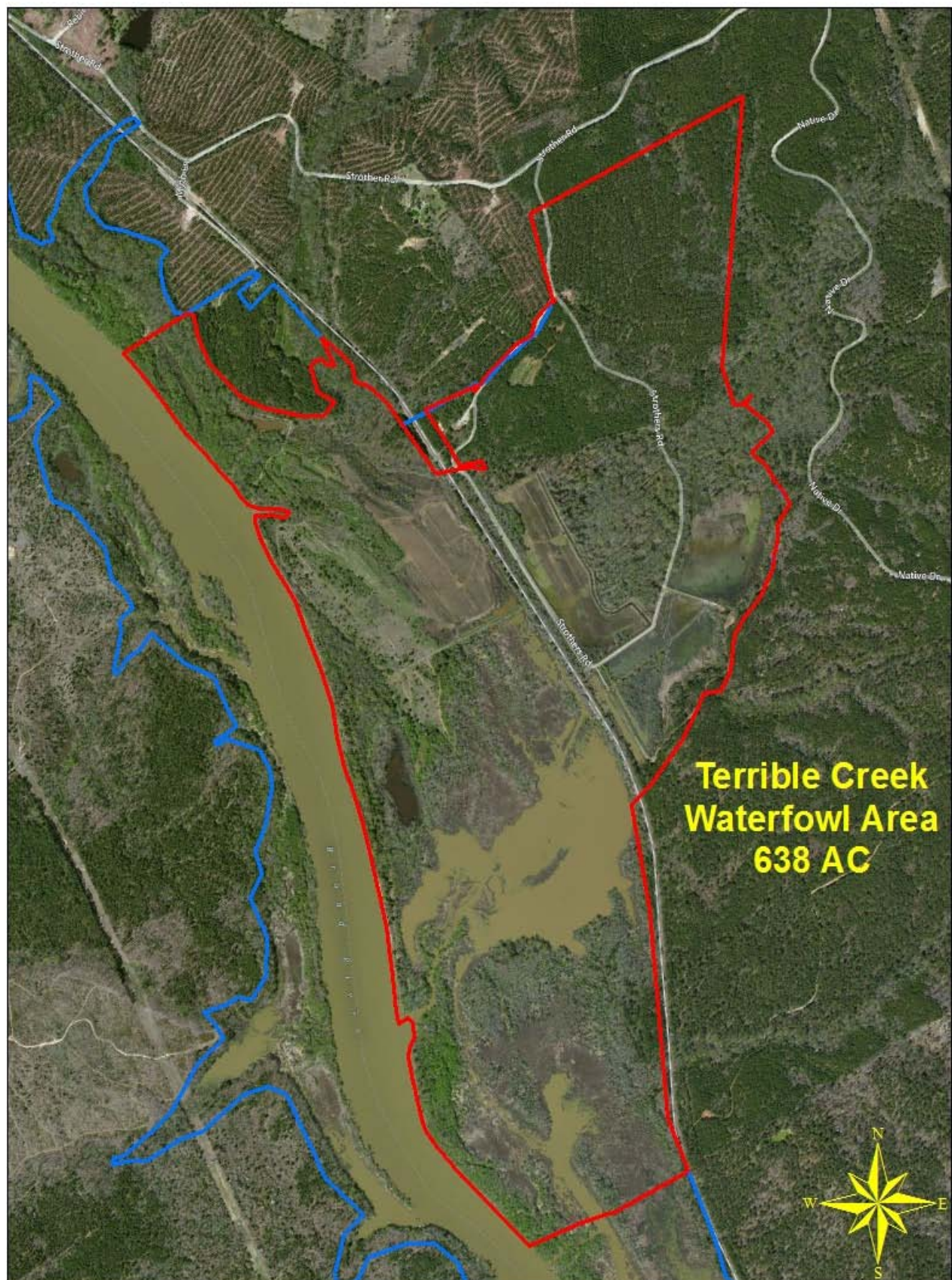
CR 330-20
Ditch

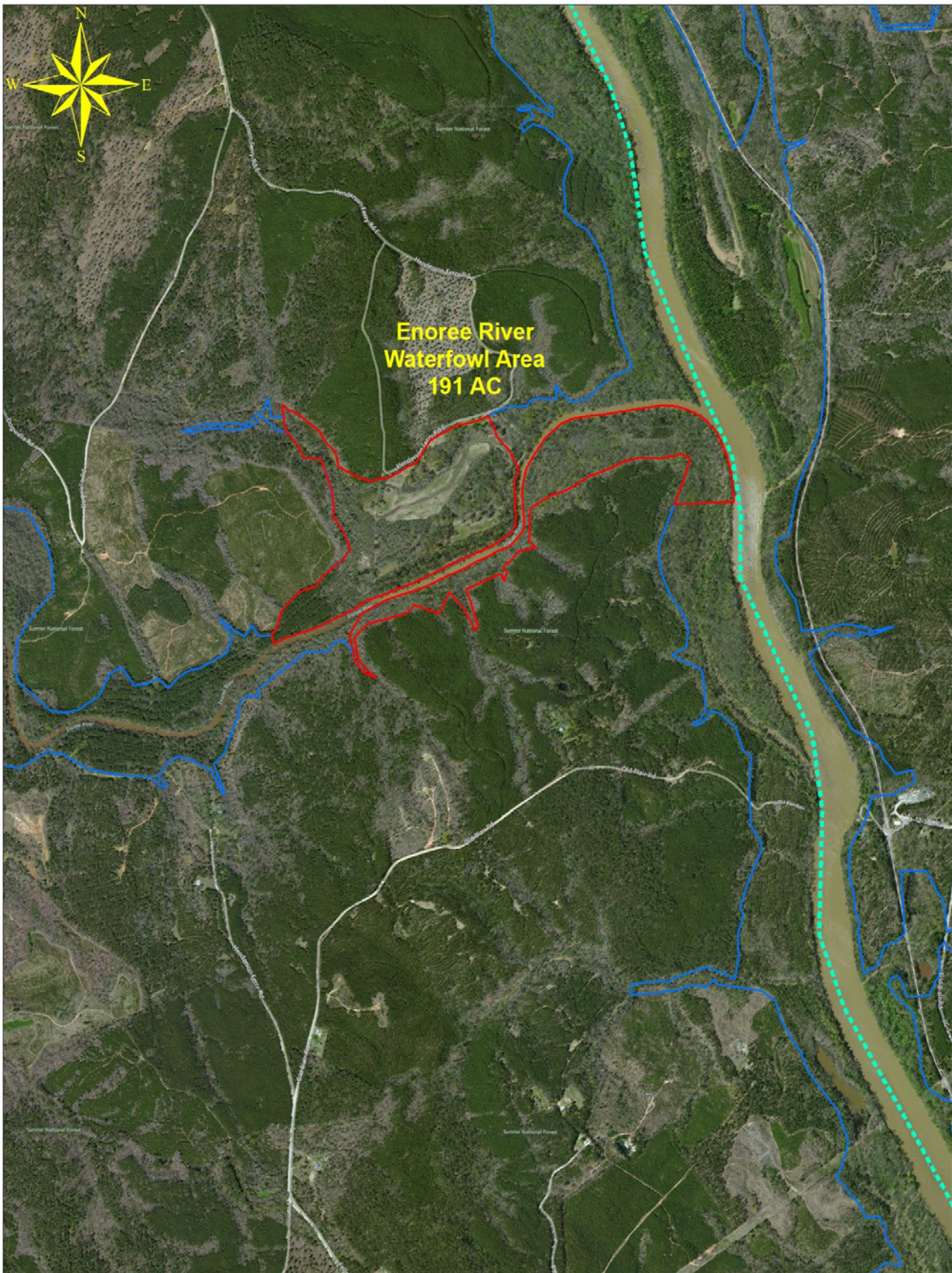







**HWY 34
Boat Ramp**





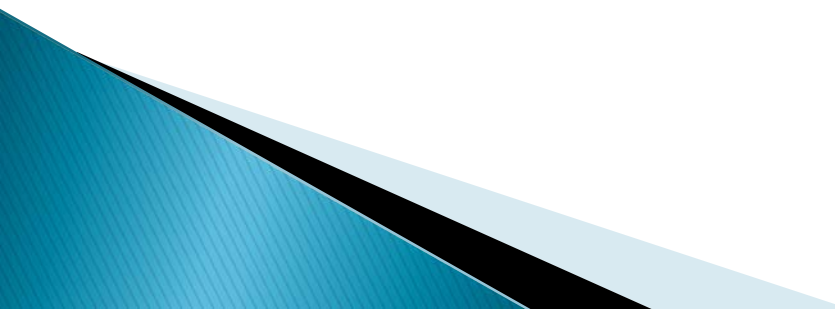
Monticello & Parr Reservoir Shoreline Management

- ▶ Shoreline Management Plan
 - ▶ (SMP)
 - ▶ Current FERC License
 - ▶ (Permit certain private use)
 - ▶ Docks
 - ▶ (200' minimum on PBL)
 - ▶ Access path
 - ▶ (10' wide path to dock)
 - ▶ Water Removal
 - ▶ Shoreline Stabilization
- 

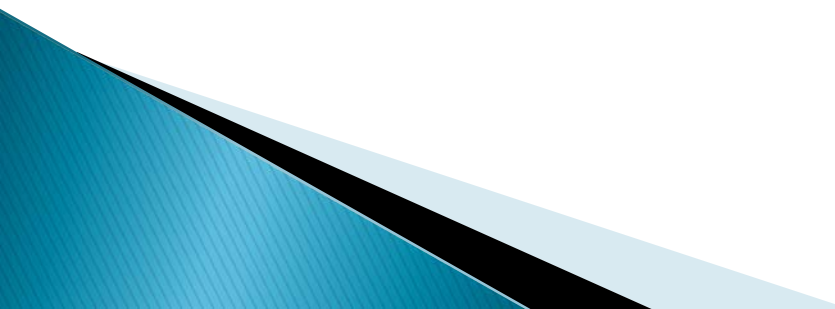
Monticello & Parr Reservoir Shoreline Management

- ▶ Prohibited Activities:
 - ▶ No roofs or covers
 - ▶ No boat slips
 - ▶ No jet skis
 - ▶ No boathouses
 - ▶ No fueling facilities
 - ▶ No boat ramps
 - ▶ No boat lifts
 - ▶ No houseboats
 - ▶ No mooring
 - ▶ No water skiing
- 

Monticello & Parr Reservoir Shoreline Management

- ▶ Prohibited Activities Cont.:
 - ▶ _ No electrical within PBL
 - ▶ No fences within PBL
 - ▶ No clearing within PBL
 - ▶ No docks On Parr
 - ▶ No docks On Rec. Lake
- 

Monticello & Parr Reservoir (Environmental)

- ▶ Environmental Policies– Maintain, Conserve and Protect the natural and manmade resources
 - ▶ Land Use Plan– The plan will comply with the FERC License and will assist with the balance between recreational use, shoreline development and environmental preservation
- 

Environmental Cont.

- ▶ Water Quality Standards– Conduct a continuing water quality monitoring program to insure water continues to be suitable for boating and fishing.
 - ▶ Undeveloped Areas Project Lands– Protect Buffer Zone, non developed company owned lands lying within the PBL will be maintained through a sound forest management Program
- 